



Subsurface Systems Bureau Update

Robert A. Tardif, P.E., Administrator
 Kevin Kaveny, Supervisor, Enforcement Section
 Subsurface Systems Bureau
 New Hampshire Department of Environmental Services

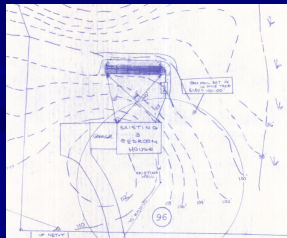
1

RULES WE'RE CONSIDERING

- Metered Flows for Lot Loading – Env-Wq
 1005.03 Minimum Lot Size



- Homeowner Design and Installation

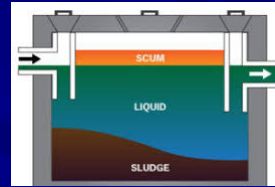


2

■ Grease Interceptors



■ Septic Tanks

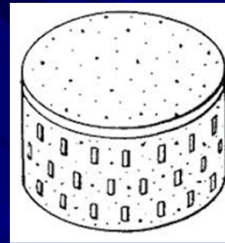


■ Designer and Installer Exams



3

■ Dry Wells



■ House Keeping Issues



■ Use of Installers Permit Number



4

General Topics

■ Rural Development Funding

- <https://www.rd.usda.gov/programs-services/single-family-housing-programs/single-family-housing-repair-loans-grants/nh>

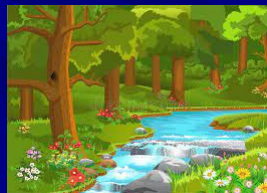


5

■ Detached ADU 2-Step Approval Process



■ Drainage on Subdivision Plans



■ Approval for Operation Discrepancies

6

■ Discussion?



7